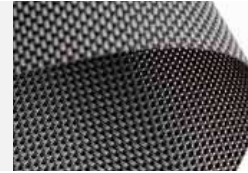




# Natté 300P

OF = 10%



# Natté 380P

OF = 5%

## Technical specifications

| TECHNICAL SPECIFICATION             |   | UNITY            | STANDARD                       | RESULT  |
|-------------------------------------|---|------------------|--------------------------------|---------|
| composition                         |   |                  | 29% Polyester + 71% PVC coated |         |
| openness factor                     |   | %                | NBN EN 410                     | 10%     |
| weight                              |   | g/m <sup>2</sup> | NF EN 12127                    | 330     |
| thickness                           |   | mm               | ISO 5084                       | 0,35    |
| density                             |   | yarn/cm          | warp                           | 18      |
|                                     |   |                  | weft                           | 18      |
| colour fastness to artificial light |   |                  | ISO 105 B02                    | >7      |
| tear strength                       | original                                      | daN              | Warp                           | 5,2     |
|                                     |   |                  | Weft                           | 4,5     |
| elongation up to break              | original                                      | %                | Warp                           | 24,5    |
|                                     |   |                  | Weft                           | 25,6    |
| breaking strength                   | original                                      | daN/5cm          | Warp                           | 146     |
|                                     |   |                  | Weft                           | 129     |
| elongation up to break              | after ISO 4892-2, 1000 hr.                    | %                | Warp                           | 25      |
|                                     |   |                  | Weft                           | 23,7    |
| breaking strength                   | after ISO 4892-2, 1000 hr.                    | daN/5cm          | Warp                           | 154     |
|                                     |   |                  | Weft                           | 127     |
| tear strength                       | after climatic chamber -30°C                  | daN              | warp                           | 4,8     |
|                                     |   |                  | weft                           | 4,9     |
| elongation up to break              | after climatic chamber -30°C                  | %                | warp                           | 3,1     |
|                                     |   |                  | weft                           | 2,7     |
| breaking strength                   | after climatic chamber -30°C                  | daN/5 cm         | warp                           | 135     |
|                                     |   |                  | weft                           | 130     |
| tear strength                       | after climatic chamber +70°C                  | daN              | warp                           | 4,8     |
|                                     |   |                  | weft                           | 4,9     |
| elongation up to break              | after climatic chamber +70°C                  | %                | warp                           | 2,7     |
|                                     |   |                  | weft                           | 2,7     |
| breaking strength                   | after climatic chamber +70°C                  | daN/5 cm         | warp                           | 100     |
|                                     |   |                  | weft                           | 120     |
| fire classification                 | Europe  |                  | UNE-EN 13501-1:2007            | B-s2,d0 |
|                                     | France  |                  | NF P92-503                     | M2      |
|                                     | Italy   |                  | UNI 9177                       | Class 1 |
|                                     | Germany                                       |                  | DIN 4102                       | B1      |
|                                     | Spain   |                  | UNE 13773                      | Clase 1 |
| roll length                         | <b>30 m</b>                                   |                  |                                |         |
| cleaning                            | with soapy water                              |                  |                                |         |
| confection                          | by heat, high frequency or ultrasonic welding |                  |                                |         |

These properties are given as indicative and don't have any contractual value

## Technical specifications

| TECHNICAL SPECIFICATION             |   | UNITY            | STANDARD                       | RESULT  |
|-------------------------------------|---|------------------|--------------------------------|---------|
| composition                         |   |                  | 29% Polyester + 71% PVC coated |         |
| openness factor                     |   | %                | NBN EN 410                     | 5%      |
| weight                              |   | g/m <sup>2</sup> | NF EN 12127                    | 385     |
| thickness                           |   | mm               | ISO 5084                       | 0,35    |
| density                             |   | yarn/cm          | warp                           | 20      |
|                                     |   |                  | weft                           | 20      |
| colour fastness to artificial light |   |                  | ISO 105 B02                    | >7      |
| tear strength                       | original                                      | daN              | Warp                           | 5,1     |
|                                     |   |                  | Weft                           | 4,2     |
| elongation up to break              | original                                      | %                | Warp                           | 24,6    |
|                                     |   |                  | Weft                           | 25      |
| breaking strength                   | original                                      | daN/5cm          | Warp                           | 141     |
|                                     |   |                  | Weft                           | 150,5   |
| elongation up to break              | after ISO 4892-2, 1000 hr.                    | %                | Warp                           | 23,3    |
|                                     |   |                  | Weft                           | 24,5    |
| breaking strength                   | after ISO 4892-2, 1000 hr.                    | daN/5cm          | Warp                           | 142     |
|                                     |   |                  | Weft                           | 154     |
| tear strength                       | after climatic chamber -30°C                  | daN              | warp                           | 5,1     |
|                                     |   |                  | weft                           | 5,15    |
| elongation up to break              | after climatic chamber -30°C                  | %                | warp                           | 4       |
|                                     |   |                  | weft                           | 3       |
| breaking strength                   | after climatic chamber -30°C                  | daN/5 cm         | warp                           | 150     |
|                                     |   |                  | weft                           | 140     |
| tear strength                       | after climatic chamber +70°C                  | daN              | warp                           | 5,3     |
|                                     |   |                  | weft                           | 4,8     |
| elongation up to break              | after climatic chamber +70°C                  | %                | warp                           | 3,6     |
|                                     |   |                  | weft                           | 2,9     |
| breaking strength                   | after climatic chamber +70°C                  | daN/5 cm         | warp                           | 120     |
|                                     |   |                  | weft                           | 120     |
| fire classification                 | Europe  |                  | UNE-EN 13501-1:2007            | B-s2,d0 |
|                                     | France  |                  | NF P92-503                     | M2      |
|                                     | Italy   |                  | UNI 9177                       | Class 1 |
|                                     | Germany                                       |                  | DIN 4102                       | B1      |
|                                     | Spain   |                  | UNE 13773                      | Clase 1 |
| roll length                         | <b>30 m</b>                                   |                  |                                |         |
| cleaning                            | with soapy water                              |                  |                                |         |
| confection                          | by heat, high frequency or ultrasonic welding |                  |                                |         |

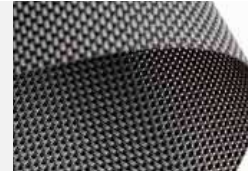
These properties are given as indicative and don't have any contractual value





# Natté 390P

OF = 3%



# Natté 420P

OF = 1%

## Technical specifications

| TECHNICAL SPECIFICATION             |   | UNITY            | STANDARD                       | RESULT  |
|-------------------------------------|---|------------------|--------------------------------|---------|
| composition                         |   |                  | 29% Polyester + 71% PVC coated |         |
| openness factor                     |   | %                | NBN EN 410                     | 3%      |
| weight                              |   | g/m <sup>2</sup> | NF EN 12127                    | 390     |
| thickness                           |   | mm               | ISO 5084                       | 0,4     |
| density                             |   | yarn/cm          | warp                           | 25      |
|                                     |   |                  | weft                           | 15      |
| colour fastness to artificial light |   |                  | ISO 105 B02                    | >7      |
| tear strength                       | original                                      | daN              | Warp                           | 4,9     |
|                                     |   |                  | Weft                           | 4,9     |
| elongation up to break              | original                                      | %                | Warp                           | 26,4    |
|                                     |   |                  | Weft                           | 25,3    |
| breaking strength                   | original                                      | daN/5cm          | Warp                           | 164     |
|                                     |   |                  | Weft                           | 147     |
| elongation up to break              | after ISO 4892-2, 1000 hr.                    | %                | Warp                           | 26      |
|                                     |   |                  | Weft                           | 23,9    |
| breaking strength                   | after ISO 4892-2, 1000 hr                     | daN/5cm          | Warp                           | 159     |
|                                     |   |                  | Weft                           | 155     |
| tear strength                       | after climatic chamber -30°C                  | daN              | warp                           | 8,49    |
|                                     |   |                  | weft                           | 5,22    |
| elongation up to break              | after climatic chamber -30°C                  | %                | warp                           | 7,21    |
|                                     |   |                  | weft                           | 4,33    |
| breaking strength                   | after climatic chamber -30°C                  | daN/5 cm         | warp                           | 252,7   |
|                                     |   |                  | weft                           | 174,7   |
| tear strength                       | after climatic chamber +70°C                  | daN              | warp                           | 8,09    |
|                                     |   |                  | weft                           | 4,9     |
| elongation up to break              | after climatic chamber +70°C                  | %                | warp                           | 7,15    |
|                                     |   |                  | weft                           | 3,85    |
| breaking strength                   | after climatic chamber +70°C                  | daN/5 cm         | warp                           | 259,4   |
|                                     |   |                  | weft                           | 156,3   |
| fire classification                 | Europe  |                  | UNE-EN 13501-1:2007            | B-s2,d0 |
|                                     | France  |                  | NF P92-503                     | M2      |
|                                     | Italy   |                  | UNI 9177                       | Class 1 |
|                                     | Germany                                       |                  | DIN 4102                       | B1      |
|                                     | Spain   |                  | UNE 13773                      | Clase 1 |
| roll length                         | <b>30 m</b>                                   |                  |                                |         |
| cleaning                            | with soapy water                              |                  |                                |         |
| confection                          | by heat, high frequency or ultrasonic welding |                  |                                |         |

These properties are given as indicative and don't have any contractual value



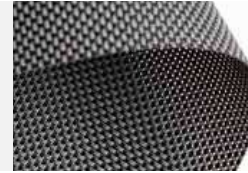
## Technical specifications

| TECHNICAL SPECIFICATION             |   | UNITY            | STANDARD                       | RESULT  |
|-------------------------------------|---|------------------|--------------------------------|---------|
| composition                         |   |                  | 29% Polyester + 71% PVC coated |         |
| openness factor                     |   | %                | NBN EN 410                     | 1%      |
| weight                              |   | g/m <sup>2</sup> | NF EN 12127                    | 420     |
| thickness                           |   | mm               | ISO 5084                       | 0,45    |
| density                             |   | yarn/cm          | warp                           | 25      |
|                                     |   |                  | weft                           | 18      |
| colour fastness to artificial light |   |                  | ISO 105 B02                    | >7      |
| tear strength                       | original                                      | daN              | Warp                           | 5,6     |
|                                     |   |                  | Weft                           | 4       |
| elongation up to break              | original                                      | %                | Warp                           | 27,2    |
|                                     |   |                  | Weft                           | 22,2    |
| breaking strength                   | original                                      | daN/5cm          | Warp                           | 185,3   |
|                                     |   |                  | Weft                           | 129,8   |
| elongation up to break              | after ISO 4892-2, 1000 hr.                    | %                | Warp                           | 26,1    |
|                                     |   |                  | Weft                           | 21,1    |
| breaking strength                   | after ISO 4892-2, 1000 hr.                    | daN/5cm          | Warp                           | 191,5   |
|                                     |   |                  | Weft                           | 134,2   |
| tear strength                       | after climatic chamber -30°C                  | daN              | warp                           | 5,19    |
|                                     |   |                  | weft                           | 3,44    |
| elongation up to break              | after climatic chamber -30°C                  | %                | warp                           | 6,93    |
|                                     |   |                  | weft                           | 4,02    |
| breaking strength                   | after climatic chamber -30°C                  | daN/5 cm         | warp                           | 266,8   |
|                                     |   |                  | weft                           | 175,8   |
| tear strength                       | after climatic chamber +70°C                  | daN              | warp                           | 5,47    |
|                                     |   |                  | weft                           | 3,59    |
| elongation up to break              | after climatic chamber +70°C                  | %                | warp                           | 6,66    |
|                                     |   |                  | weft                           | 3,75    |
| breaking strength                   | after climatic chamber +70°C                  | daN/5 cm         | warp                           | 244,5   |
|                                     |   |                  | weft                           | 162,6   |
| fire classification                 | Europe  |                  | UNE-EN 13501-1:2007            | B-s2,d0 |
|                                     | France  |                  | NF P92-503                     | M2      |
|                                     | Italy   |                  | UNI 9177                       | Class 1 |
|                                     | Germany                                       |                  | DIN 4102                       | B1      |
|                                     | Spain   |                  | UNE 13773                      | Clase 1 |
| roll length                         | <b>30 m</b>                                   |                  |                                |         |
| cleaning                            | with soapy water                              |                  |                                |         |
| confection                          | by heat, high frequency or ultrasonic welding |                  |                                |         |

These properties are given as indicative and don't have any contractual value



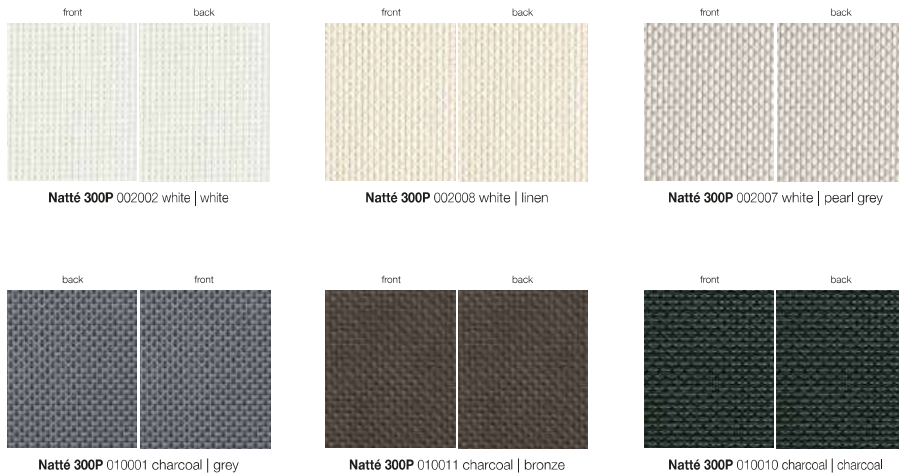
# Natté 300P



POLYESTER

OF = 10%

## Colours & references



| Natté 300P                 | 200 cm               | 320 cm |
|----------------------------|----------------------|--------|
|                            | 002002 white   white | •      |
| 002008 white   linen       | •                    | •      |
| 002007 white   pearl grey  | •                    | •      |
| 010001 charcoal   grey     | •                    | •      |
| 010011 charcoal   bronze   | •                    | •      |
| 010010 charcoal   charcoal | •                    | •      |

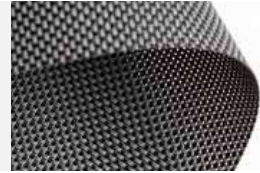
## Solar energetic properties

| Natté 300P<br>European Standard EN 14501<br>Calculation G-value according to EN 15305-1 version 7.0 |                     | SOLAR ENERGETIC PROPERTIES |                          |                            |                                 |                                 |                                 |                                 |   |                          |      | VISUAL PROPERTIES |  |
|---|---------------------|----------------------------|--------------------------|----------------------------|---------------------------------|---------------------------------|---------------------------------|---------------------------------|---|--------------------------|------|-------------------|--|
|   |                     | FABRIC                     |                          |                            | FABRIC + GLAZING                |                                 |                                 |                                 | G-factor = total solar energy transmittance |                          |      |                   |  |
|   |                     |                            |                          |                            | INTERIOR                        |                                 |                                 |                                 |   |                          |      |                   |  |
|   |                     | As = Solar Absorbance %    | Rs = Solar Reflectance % | Ts = Solar Transmittance % | Glazing A - Gv = 0,85 - U = 5,8 | Glazing B - Gv = 0,76 - U = 2,9 | Glazing C - Gv = 0,59 - U = 1,2 | Glazing D - Gv = 0,32 - U = 1,1 | Tv = Visible Light Transmittance %          | Tuv = UV Transmittance % |      |                   |  |
| references  | colours             | front                      | back                     | front                      | back                            | front                           | back                            | front                           | back  | front                    | back |                   |  |
| 002002  | white   white       | front                      | back                     | 11,6                       | 64,0                            | 24,4                            | 0,37                            | 0,38                            | 0,36  | 0,25                     | 23,6 | 10,7              |  |
|   |                     | front                      | back                     | 11,6                       | 64,0                            | 24,4                            | 0,37                            | 0,38                            | 0,36  | 0,25                     | 23,6 | 10,7              |  |
| 002008  | white   linen       | front                      | back                     | 19,8                       | 57,7                            | 22,5                            | 0,41                            | 0,41                            | 0,38  | 0,26                     | 20,4 | 11,8              |  |
|   |                     | front                      | back                     | 19,9                       | 57,6                            | 22,5                            | 0,41                            | 0,41                            | 0,38  | 0,26                     | 20,4 | 11,8              |  |
| 002007  | white   pearl grey  | front                      | back                     | 33,1                       | 46,6                            | 20,3                            | 0,47                            | 0,47                            | 0,42  | 0,27                     | 17,7 | 11,8              |  |
|   |                     | front                      | back                     | 33,5                       | 46,2                            | 20,3                            | 0,47                            | 0,47                            | 0,42  | 0,27                     | 17,7 | 11,8              |  |
| 010001  | charcoal   grey     | front                      | back                     | 77,0                       | 10,0                            | 13,0                            | 0,62                            | 0,62                            | 0,53  | 0,30                     | 12,7 | 12,7              |  |
|   |                     | front                      | back                     | 77,0                       | 10,0                            | 13,0                            | 0,62                            | 0,62                            | 0,53  | 0,30                     | 12,7 | 12,7              |  |
| 010011  | charcoal   bronze   | front                      | back                     | 79,5                       | 6,7                             | 13,8                            | 0,64                            | 0,64                            | 0,54  | 0,30                     | 13,6 | 13,6              |  |
|   |                     | front                      | back                     | 79,5                       | 6,7                             | 13,8                            | 0,64                            | 0,64                            | 0,54  | 0,30                     | 13,6 | 13,6              |  |
| 010010  | charcoal   charcoal | front                      | back                     | 81,5                       | 5,7                             | 12,8                            | 0,70                            | 0,67                            | 0,55  | 0,30                     | 12,7 | 12,7              |  |
|   |                     | front                      | back                     | 81,5                       | 5,7                             | 12,8                            | 0,70                            | 0,67                            | 0,55  | 0,30                     | 12,7 | 12,7              |  |

|  |           |
|--|-----------|
| GLAZING A = clear single glazing 4 mm  | Gv = 0,85 |
| GLAZING B = clear double glazing (4/12/4), space filled with air   | Gv = 0,76 |
| GLAZING C = double glazing (4/16/4), with a low emissivity coating in position 3, space filled with argon            | Gv = 0,59 |
| GLAZING D = reflective double glazing (4/16/4), with a low emissivity coating in position 2, space filled with argon | Gv = 0,32 |



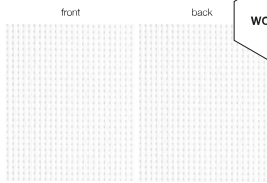
# Natté 380P



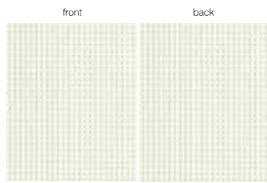
POLYESTER

OF = 5%

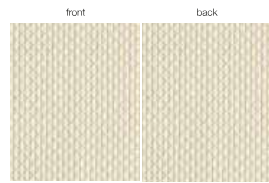
## Colours & references



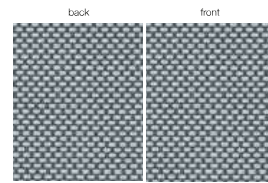
Natté 380P 092092 WOW white



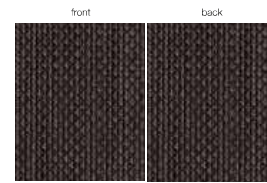
Natté 380P 002002 white | white



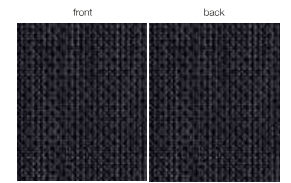
Natté 380P 002008 white | linen



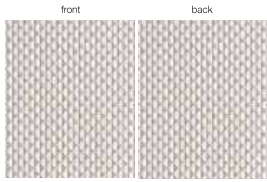
Natté 380P 010007 charcoal | pearl grey



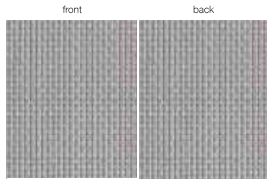
Natté 380P 010011 charcoal | bronze



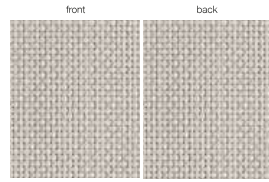
Natté 380P 010010 charcoal | charcoal



Natté 380P 002007 white | pearl grey



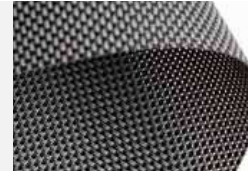
Natté 380P 007007 pearl grey | pearl grey



Natté 380P 007008 pearl grey | linen

| Natté 380P                     | 200 cm | 250 cm | 320 cm |
|--------------------------------|--------|--------|--------|
| 092092 WOW white               |        |        |        |
| 002002 white   white           | •      | •      | •      |
| 002008 white   linen           | •      | •      | •      |
| 002007 white   pearl grey      | •      | •      | •      |
| 007007 pearl grey   pearl grey | •      | •      | •      |
| 007008 pearl grey   linen      | •      | •      | •      |
| 010007 charcoal   pearl grey   | •      | •      | •      |
| 010011 charcoal   bronze       | •      | •      | •      |
| 010010 charcoal   charcoal     | •      | •      | •      |

# Natté 380P



POLYESTER

OF = 5%

## Solar energetic properties

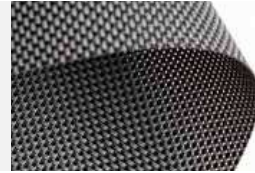
| Natté 380P<br>European Standard EN 14501<br>Calculation G-value according to EN 15393-1 version 7.0 |                         | SOLAR ENERGETIC PROPERTIES |                          |                            |   |                                 |                                 |                                 |                                    | VISUAL PROPERTIES        |      |  |
|---|-------------------------|----------------------------|--------------------------|----------------------------|---|---------------------------------|---------------------------------|---------------------------------|------------------------------------|--------------------------|------|--|
|   |                         | FABRIC                     |                          |                            | FABRIC + GLAZING                            |                                 |                                 |                                 | VISUAL PROPERTIES                  |                          |      |  |
|   |                         |                            |                          |                            | INTERIOR                                    |                                 |                                 |                                 |                                    |                          |      |  |
| references  | colours                 | As = Solar Absorbance %    | Rs = Solar Reflectance % | Ts = Solar Transmittance % | G-factor = total solar energy transmittance |                                 |                                 |                                 | Tv = Visible Light Transmittance % | Tuv = UV Transmittance % |      |  |
|   |                         |                            |                          |                            | Glazing A - Gv = 0,85 - U = 5,8             | Glazing B - Gv = 0,76 - U = 2,9 | Glazing C - Gv = 0,59 - U = 1,2 | Glazing D - Gv = 0,32 - U = 1,1 |                                    |                          |      |  |
|   |                         |                            |                          |                            |   |                                 |                                 |                                 |                                    |                          |      |  |
| 092092  | WOW white               | front                      |                          |                            |   |                                 |                                 |                                 |                                    |                          |      |  |
|   |                         | back                       |                          |                            |   |                                 |                                 |                                 |                                    |                          |      |  |
| 002002  | white   white           | front                      | 10,0                     | 66,6                       | 23,4  | 0,36                            | 0,37                            | 0,36                            | 0,25                               | 21,8                     | 10,9 |  |
|   |                         | back                       | 9,9                      | 66,8                       | 23,4  | 0,35                            | 0,37                            | 0,36                            | 0,25                               | 21,8                     | 10,9 |  |
| 002008  | white   linen           | front                      | 21,3                     | 59,8                       | 18,9  | 0,39                            | 0,40                            | 0,38                            | 0,26                               | 16,9                     | 7,9  |  |
|   |                         | back                       | 21,5                     | 59,7                       | 18,9  | 0,39                            | 0,40                            | 0,38                            | 0,26                               | 16,9                     | 7,9  |  |
| 002007  | white   pearl grey      | front                      | 35,2                     | 48,8                       | 16,1  | 0,45                            | 0,45                            | 0,41                            | 0,27                               | 13,6                     | 8,5  |  |
|   |                         | back                       | 35,4                     | 48,5                       | 16,1  | 0,45                            | 0,46                            | 0,41                            | 0,27                               | 13,6                     | 8,5  |  |
| 007007  | pearl grey   pearl grey | front                      | 50,8                     | 36,4                       | 12,8  | 0,52                            | 0,52                            | 0,45                            | 0,28                               | 10,0                     | 7,9  |  |
|   |                         | back                       | 50,6                     | 36,7                       | 12,8  | 0,52                            | 0,51                            | 0,45                            | 0,28                               | 10,0                     | 7,9  |  |
| 007008  | pearl grey   linen      | front                      | 39,3                     | 45,7                       | 15,0  | 0,47                            | 0,47                            | 0,42                            | 0,27                               | 11,9                     | 8,2  |  |
|   |                         | back                       | 39,2                     | 45,8                       | 15,0  | 0,47                            | 0,47                            | 0,42                            | 0,27                               | 11,9                     | 8,2  |  |

| Natté 380P<br>European Standard EN 14501<br>Calculation G-value according to EN 15393-1 version 7.0 |                       | SOLAR ENERGETIC PROPERTIES |                          |                            |   |                                 |                                 |                                 |                                    | VISUAL PROPERTIES        |     |  |
|---|-----------------------|----------------------------|--------------------------|----------------------------|---|---------------------------------|---------------------------------|---------------------------------|------------------------------------|--------------------------|-----|--|
|   |                       | FABRIC                     |                          |                            | FABRIC + GLAZING                            |                                 |                                 |                                 | VISUAL PROPERTIES                  |                          |     |  |
|   |                       |                            |                          |                            | INTERIOR                                    |                                 |                                 |                                 |                                    |                          |     |  |
| references  | colours               | As = Solar Absorbance %    | Rs = Solar Reflectance % | Ts = Solar Transmittance % | G-factor = total solar energy transmittance |                                 |                                 |                                 | Tv = Visible Light Transmittance % | Tuv = UV Transmittance % |     |  |
|   |                       |                            |                          |                            | Glazing A - Gv = 0,85 - U = 5,8             | Glazing B - Gv = 0,76 - U = 2,9 | Glazing C - Gv = 0,59 - U = 1,2 | Glazing D - Gv = 0,32 - U = 1,1 |                                    |                          |     |  |
|   |                       |                            |                          |                            |   |                                 |                                 |                                 |                                    |                          |     |  |
| 010007  | charcoal   pearl grey | front                      | 73,4                     | 17,7                       | 8,9   | 0,57                            | 0,58                            | 0,50                            | 0,29                               | 8,5                      | 8,1 |  |
|   |                       | back                       | 73,4                     | 17,7                       | 8,9   | 0,57                            | 0,58                            | 0,50                            | 0,29                               | 8,5                      | 8,1 |  |
| 010011  | charcoal   bronze     | front                      | 84,8                     | 7,3                        | 7,9   | 0,68                            | 0,66                            | 0,55                            | 0,30                               | 7,6                      | 7,5 |  |
|   |                       | back                       | 84,8                     | 7,3                        | 7,9   | 0,68                            | 0,66                            | 0,55                            | 0,30                               | 7,6                      | 7,5 |  |
| 010010  | charcoal   charcoal   | front                      | 88,0                     | 5,7                        | 6,3   | 0,69                            | 0,67                            | 0,55                            | 0,30                               | 6,3                      | 6,3 |  |
|   |                       | back                       | 88,0                     | 5,7                        | 6,3   | 0,69                            | 0,67                            | 0,55                            | 0,30                               | 6,3                      | 6,3 |  |

|  |           |
|--|-----------|
| GLAZING A = clear single glazing 4 mm  | Gv = 0,85 |
| GLAZING B = clear double glazing (4/12/4), space filled with air   | Gv = 0,76 |
| GLAZING C = double glazing (4/16/4), with a low emissivity coating in position 3, space filled with argon            | Gv = 0,59 |
| GLAZING D = reflective double glazing (4/16/4), with a low emissivity coating in position 2, space filled with argon | Gv = 0,32 |



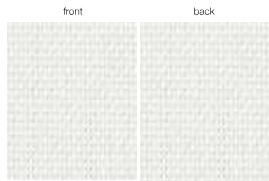
# Natté 390P



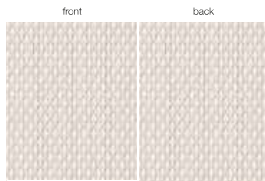
POLYESTER

OF = 3%

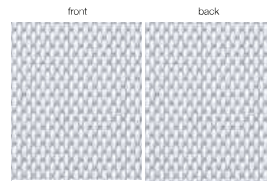
## Colours & references



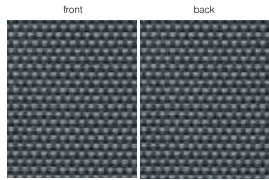
Natté 390P 002002 white | white



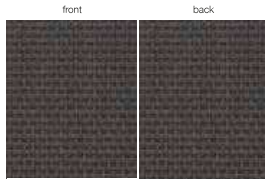
Natté 390P 002008 white | linen



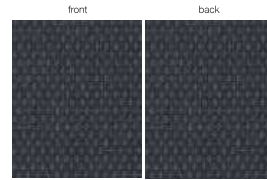
Natté 390P 002007 white | pearl grey



Natté 390P 010001 charcoal | grey



Natté 390P 010011 charcoal | bronze



Natté 390P 010010 charcoal | charcoal

| Natté 390P                 | 200 cm               | 320 cm |
|----------------------------|----------------------|--------|
|                            | 002002 white   white | •      |
| 002008 white   linen       | •                    | •      |
| 002007 white   pearl grey  | •                    | •      |
| 010001 charcoal   grey     | •                    | •      |
| 010011 charcoal   bronze   | •                    | •      |
| 010010 charcoal   charcoal | •                    | •      |

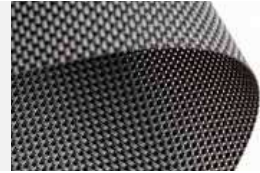
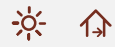
## Solar energetic properties

| Natté 390P<br>European Standard EN 14501<br>Calculation G-factor according to EN 15393-1 version 7.0 |         | SOLAR ENERGETIC PROPERTIES |                          |                            |   |                                 |                                 |                                 |                                    | VISUAL PROPERTIES |      |                          |
|--|---------|----------------------------|--------------------------|----------------------------|---|---------------------------------|---------------------------------|---------------------------------|------------------------------------|-------------------|------|--------------------------|
|  |         | FABRIC                     |                          |                            | FABRIC + GLAZING                            |                                 |                                 |                                 | INTERIOR                           |                   |      |                          |
|  |         |                            |                          |                            | G-factor = total solar energy transmittance |                                 |                                 |                                 |                                    |                   |      |                          |
|  |         | As = Solar Absorbance %    | Rs = Solar Reflectance % | Ts = Solar Transmittance % | Glazing A - Gv = 0,85 - U = 5,8             | Glazing B - Gv = 0,76 - U = 2,9 | Glazing C - Gv = 0,59 - U = 1,2 | Glazing D - Gv = 0,32 - U = 1,1 | Tv = Visible Light Transmittance % |                   |      | Tuv = UV Transmittance % |
| references   | colours | front                      | back                     | front                      | back  | front                           | back                            | front                           | back                               | front             | back |                          |
|  |         | 002002                     | white   white            | 12,5                       | 61,4  | 26,1                            | 0,38                            | 0,39                            | 0,37                               | 0,25              | 25,2 | 8,3                      |
|  |         | back                       |                          | 12,5                       | 61,4  | 26,1                            | 0,38                            | 0,39                            | 0,37                               | 0,25              | 25,2 | 8,3                      |
|  |         | front                      |                          | 20,4                       | 55,8  | 23,8                            | 0,40                            | 0,42                            | 0,39                               | 0,26              | 21,6 | 9,4                      |
|  |         | back                       |                          | 20,4                       | 55,8  | 23,8                            | 0,40                            | 0,42                            | 0,39                               | 0,26              | 21,6 | 9,4                      |
|  |         | front                      |                          | 32,2                       | 51,4  | 16,4                            | 0,41                            | 0,43                            | 0,40                               | 0,26              | 14,3 | 5,5                      |
|  |         | back                       |                          | 32,2                       | 51,4  | 16,4                            | 0,41                            | 0,43                            | 0,40                               | 0,26              | 14,3 | 5,5                      |
|  |         | front                      |                          | 83,2                       | 8,5   | 8,3                             | 0,62                            | 0,62                            | 0,53                               | 0,30              | 8,2  | 8,3                      |
|  |         | back                       |                          | 83,2                       | 8,5   | 8,3                             | 0,62                            | 0,62                            | 0,53                               | 0,30              | 8,2  | 8,3                      |
|  |         | front                      |                          | 87,5                       | 6,8   | 5,7                             | 0,62                            | 0,63                            | 0,53                               | 0,30              | 5,7  | 5,7                      |
|  |         | back                       |                          | 87,5                       | 6,8   | 5,7                             | 0,62                            | 0,63                            | 0,53                               | 0,30              | 5,7  | 5,7                      |
|  |         | front                      |                          | 88,2                       | 6,0   | 5,8                             | 0,62                            | 0,63                            | 0,54                               | 0,30              | 5,8  | 5,9                      |
|  |         | back                       |                          | 88,2                       | 6,0   | 5,8                             | 0,62                            | 0,63                            | 0,54                               | 0,30              | 5,8  | 5,9                      |





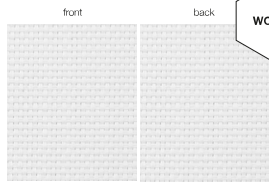
# Natté 420P



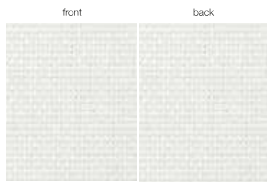
POLYESTER

OF = 1%

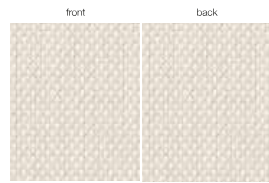
## Colours & references



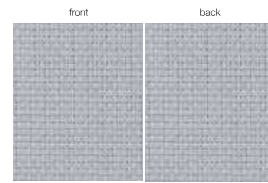
Natté 420P 092092 WOW white



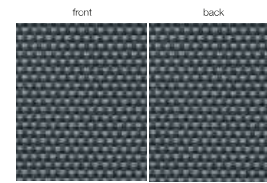
Natté 420P 002002 white | white



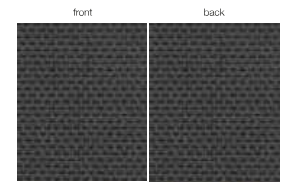
Natté 420P 002008 white | linen



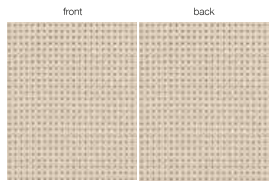
Natté 420P 007007 pearl grey | pearl grey



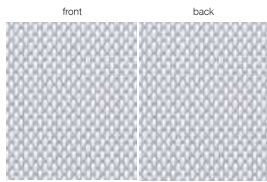
Natté 420P 010001 charcoal | grey



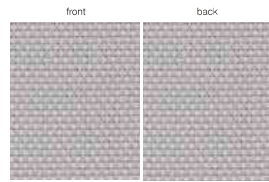
Natté 420P 010011 charcoal | bronze



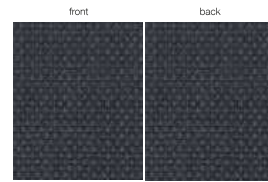
Natté 420P 008008 linen | linen



Natté 420P 002007 white | pearl grey



Natté 420P 007008 pearl grey | linen

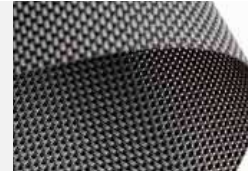


Natté 420P 010010 charcoal | charcoal

| Natté 420P                     | 200 cm           | 250 cm | 320 cm |
|--------------------------------|------------------|--------|--------|
|                                | 092092 WOW white |        |        |
| 002002 white   white           | •                | •      | •      |
| 002008 white   linen           | •                | •      | •      |
| 008008 linen   linen           | •                | •      | •      |
| 002007 white   pearl grey      | •                | •      | •      |
| 007008 pearl grey   linen      | •                | •      | •      |
| 007007 pearl grey   pearl grey | •                | •      | •      |
| 010001 charcoal   grey         | •                | •      | •      |
| 010011 charcoal   bronze       | •                | •      | •      |
| 010010 charcoal   charcoal     | •                | •      | •      |



# Natté 420P



POLYESTER

OF = 1%

## Solar energetic properties

| Natté 420P<br>European Standard EN 14501<br>Calculation G-value according to EN 15393-1 version 7.0 |                    |       |      | SOLAR ENERGETIC PROPERTIES |      |       |                         |                          |                            |                                    |                          | VISUAL PROPERTIES |     |   |  |
|---|--------------------|-------|------|----------------------------|------|-------|-------------------------|--------------------------|----------------------------|------------------------------------|--------------------------|-------------------|-----|---|--|
|   |                    |       |      | FABRIC                     |      |       | FABRIC + GLAZING        |                          |                            |                                    | INTERIOR                 |                   |     | G-factor = total solar energy transmittance |  |
|   |                    |       |      |                            |      |       | As = Solar Absorbance % | Rs = Solar Reflectance % | Ts = Solar Transmittance % | Glazing A - Gv = 0,85 - U = 5,8    |                          |                   |     |   |  |
| references  | colours            | front | back | front                      | back | front | back                    | front                    | back                       | Tv = Visible Light Transmittance % | Tuv = UV Transmittance % |                   |     |   |  |
| 092092  | WOW white          |       |      | front                      |      |       |                         |                          |                            |                                    |                          |                   |     |   |  |
| 002002  | white   white      |       |      | front                      | 13,1 | 66,2  | 20,7                    | 0,34                     | 0,36                       | 0,35                               | 0,25                     | 19,4              | 3,5 |   |  |
|   |                    |       |      | back                       | 13,1 | 66,2  | 20,7                    | 0,34                     | 0,36                       | 0,35                               | 0,25                     | 19,4              | 3,5 |   |  |
| 002008  | white   linen      |       |      | front                      | 23,0 | 59,1  | 17,9                    | 0,38                     | 0,39                       | 0,38                               | 0,26                     | 15,0              | 4,2 |   |  |
|   |                    |       |      | back                       | 23,0 | 59,1  | 17,9                    | 0,38                     | 0,39                       | 0,38                               | 0,26                     | 15,0              | 4,2 |   |  |
| 008008  | linen   linen      |       |      | front                      | 35,3 | 46,2  | 18,5                    | 1,0                      | 1,0                        | 1,0                                | 2,0                      | 12,6              | 3,4 |   |  |
|   |                    |       |      | back                       | 35,3 | 46,2  | 18,5                    | 1,0                      | 1,0                        | 1,0                                | 2,0                      | 12,6              | 3,4 |   |  |
| 002007  | white   pearl grey |       |      | front                      | 36,4 | 48,9  | 14,7                    | 0,42                     | 0,44                       | 0,41                               | 0,26                     | 12,2              | 5,1 |   |  |
|   |                    |       |      | back                       | 36,4 | 48,9  | 14,7                    | 0,42                     | 0,44                       | 0,41                               | 0,26                     | 12,2              | 5,1 |   |  |
| 007008  | pearl grey   linen |       |      | front                      | 52,6 | 39,7  | 7,7                     | 0,45                     | 0,48                       | 0,43                               | 0,27                     | 5,0               | 3,2 |   |  |
|   |                    |       |      | back                       | 52,6 | 39,7  | 7,7                     | 0,45                     | 0,48                       | 0,43                               | 0,27                     | 5,0               | 3,2 |   |  |

| Natté 420P<br>European Standard EN 14501<br>Calculation G-value according to EN 15393-1 version 7.0 |                         |       |      | SOLAR ENERGETIC PROPERTIES |      |       |                         |                          |                            |                                    |                          | VISUAL PROPERTIES |     |   |  |
|---|-------------------------|-------|------|----------------------------|------|-------|-------------------------|--------------------------|----------------------------|------------------------------------|--------------------------|-------------------|-----|---|--|
|   |                         |       |      | FABRIC                     |      |       | FABRIC + GLAZING        |                          |                            |                                    | INTERIOR                 |                   |     | G-factor = total solar energy transmittance |  |
|   |                         |       |      |                            |      |       | As = Solar Absorbance % | Rs = Solar Reflectance % | Ts = Solar Transmittance % | Glazing A - Gv = 0,85 - U = 5,8    |                          |                   |     |   |  |
| references  | colours                 | front | back | front                      | back | front | back                    | front                    | back                       | Tv = Visible Light Transmittance % | Tuv = UV Transmittance % |                   |     |   |  |
| 007007  | pearl grey   pearl grey |       |      | front                      | 60,1 | 33,9  | 6,0                     | 0,48                     | 0,50                       | 0,45                               | 0,27                     | 4,0               | 2,9 |   |  |
|   |                         |       |      | back                       | 60,1 | 33,9  | 6,0                     | 0,48                     | 0,50                       | 0,45                               | 0,27                     | 4,0               | 2,9 |   |  |
| 010001  | charcoal   grey         |       |      | front                      | 86,8 | 9,8   | 3,4                     | 0,60                     | 0,61                       | 0,52                               | 0,29                     | 3,3               | 3,3 |   |  |
|   |                         |       |      | back                       | 86,8 | 9,8   | 3,4                     | 0,60                     | 0,61                       | 0,52                               | 0,29                     | 3,3               | 3,3 |   |  |
| 010011  | charcoal   bronze       |       |      | front                      | 89,6 | 7,1   | 3,3                     | 0,61                     | 0,62                       | 0,53                               | 0,30                     | 3,2               | 3,3 |   |  |
|   |                         |       |      | back                       | 89,6 | 7,1   | 3,3                     | 0,61                     | 0,62                       | 0,53                               | 0,30                     | 3,2               | 3,3 |   |  |
| 010010  | charcoal   charcoal     |       |      | front                      | 90,6 | 6,2   | 3,2                     | 0,62                     | 0,63                       | 0,54                               | 0,30                     | 3,2               | 3,2 |   |  |
|   |                         |       |      | back                       | 90,6 | 6,2   | 3,2                     | 0,62                     | 0,63                       | 0,54                               | 0,30                     | 3,2               | 3,2 |   |  |

|  |           |
|--|-----------|
| GLAZING A = clear single glazing 4 mm  | Gv = 0,85 |
| GLAZING B = clear double glazing (4/12/4), space filled with air   | Gv = 0,76 |
| GLAZING C = double glazing (4/16/4), with a low emissivity coating in position 3, space filled with argon            | Gv = 0,59 |
| GLAZING D = reflective double glazing (4/16/4), with a low emissivity coating in position 2, space filled with argon | Gv = 0,32 |

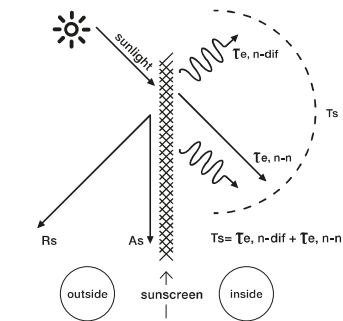


# Working of a sunscreen



## Sunscreen = protection against sunrays

Sunscreen means protection against the sunrays, so the function is the protection against light and heat, which is expressed in several properties.



|                 |                             |
|-----------------|-----------------------------|
| <b>Rs</b>       | Solar reflectance           |
| <b>As</b>       | Solar absorptance           |
| <b>Ts</b>       | Solar transmittance         |
| <b>Te,n-dif</b> | Diffuse solar transmittance |
| <b>Te,n-n</b>   | Normal solar transmittance  |

## Classes indicate effect of a sunscreen

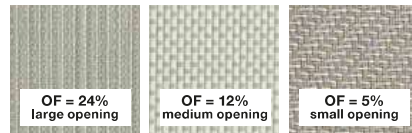
Based on certain properties, the screen can be split up in classes, from 0 to 4. Those classes are used, starting from the norm EN 14501, to indicate the effect of a certain sunscreen.

| influence on thermal and visual comfort |                    |
|---|--------------------|
| <b>Class 0</b>                          | very little effect |
| <b>Class 1</b>                          | little effect      |
| <b>Class 2</b>                          | moderate effect    |
| <b>Class 3</b>                          | good effect        |
| <b>Class 4</b>                          | very good effect   |

## Visual properties

### Openness factor

The openness of a screen is indicated by the openness factor = **OF**. The openness coefficient is the relative area of the openings in the fabric seen under a given incidence. The openness factor is seen under a normal incidence.



The sunrays are subdivided in: **Visible light**, **UV-light** and **IR-light**.

**Visible light** (55% of the sun-energy) is that part for which our eyes are most sensitive. How larger the light intensity, how more detrimental for our eyes.

The factor Visible Light Transmittance = **Tv**, is the ratio of visible light that will be transmitted. How lower this factor can be kept, how better for the eyes.

**UV-light** (3% of the sun-energy) is the part of radiation which is detrimental for our health. This factor is indicated by the UV Transmittance = **Tuv**. This is the quantity UV-light transmitted by the sunscreen.

**IR-light** is invisible. This is however 42% of the sun-energy. These rays care for the reheating of solid substances and gases.

### Influence of colours

The choice of the colour has direct influence on the criteria which justify the use of sunscreen protection:

- Protection against visible light, expressed by the factor **Tv**.
- Protection against sun-energy, expressed by the **G** value.
- Protection against secondary heat, expressed by the factor **Qi**.
- Protection against UV-light, expressed by the factor **Tuv**.

## Visual properties: classes

### Glare control

The capacity of the solar protection device to control the luminance level of openings and to reduce the luminance contrasts between different zones within the field.

| Tv,n-n               | Tv,n-dif        |                        |                        |                 |
|----------------------|-----------------|------------------------|------------------------|-----------------|
|                      | Tv,n-dif < 0,02 | 0,02 ≤ Tv,n-dif < 0,04 | 0,04 ≤ Tv,n-dif < 0,08 | Tv,n-dif ≥ 0,08 |
| Tv,n-n > 0,10        | 0               | 0                      | 0                      | 0               |
| 0,05 < Tv,n-n ≤ 0,10 | 1               | 1                      | 0                      | 0               |
| Tv,n-n ≤ 0,05        | 3               | 2                      | 1                      | 1               |
| Tv,n-n = 0,00        | 4               | 3                      | 2                      | 2               |

### Privacy at night

Night privacy is the capacity of an internal or external blind or a shutter in the fully extended position or fully extended and closed position to protect persons, at night in normal light conditions from external view. External views means the ability of an external observer located 5m from the fully extended and closed product, to distinguish a person or object standing 1m behind the protection device in the room.

| Tv,n-n               | Tv,n-dif            |                        |                 |
|----------------------|---------------------|------------------------|-----------------|
|                      | 0 < Tv,n-dif ≤ 0,04 | 0,04 < Tv,n-dif ≤ 0,15 | Tv,n-dif > 0,15 |
| Tv,n-n > 0,10        | 0                   | 0                      | 0               |
| 0,05 < Tv,n-n ≤ 0,10 | 1                   | 1                      | 1               |
| Tv,n-n ≤ 0,05        | 2                   | 2                      | 2               |
| Tv,n-n = 0,00        | 4                   | 3                      | 2               |

### Visual contact with the outside

Visual contact with the outside is the capacity of the solar protection device to allow an exterior view when it is fully extended. This function is affected by different light conditions during the day.

| Tv,n-n               | Tv,n-dif            |                        |                 |
|----------------------|---------------------|------------------------|-----------------|
|                      | 0 < Tv,n-dif ≤ 0,04 | 0,04 < Tv,n-dif ≤ 0,15 | Tv,n-dif > 0,15 |
| Tv,n-n > 0,10        | 4                   | 3                      | 2               |
| 0,05 < Tv,n-n ≤ 0,10 | 3                   | 2                      | 1               |
| Tv,n-n ≤ 0,05        | 2                   | 1                      | 0               |
| Tv,n-n = 0,00        | 0                   | 0                      | 0               |

### Daylight utilisation

Daylight utilisation is characterised by:

- the capacity of the solar protection device to reduce the time period during the artificial light is required.
- the capacity of the solar protection device to optimise the daylight which is available.

| CLASS    | 0               | 1                      | 2                      | 3                      | 4               |
|----------|-----------------|------------------------|------------------------|------------------------|-----------------|
| Tv,dif-h | Tv,dif-h < 0,02 | 0,02 ≤ Tv,dif-h < 0,10 | 0,10 ≤ Tv,dif-h < 0,25 | 0,25 ≤ Tv,dif-h < 0,40 | Tv,dif-h ≥ 0,40 |