

Shantung



1028

vainilla | vanilla



1001

blanco crudo | raw white



1003

marrón | brown



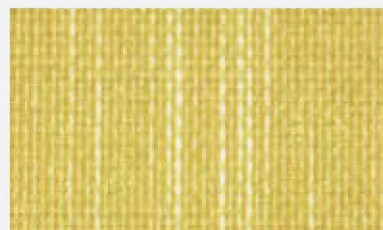
1015

arena | sand



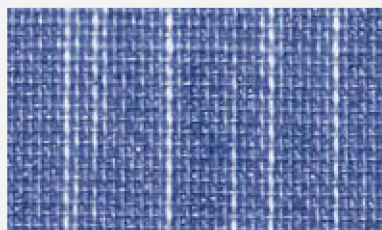
1151

ocre | ochre



1117

azul | blue



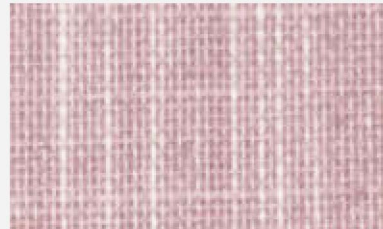
1004

capuccino



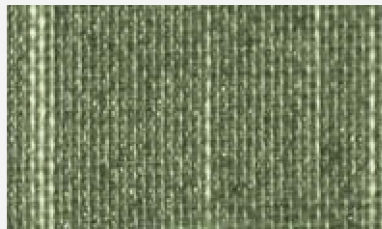
1012

malva | mauve



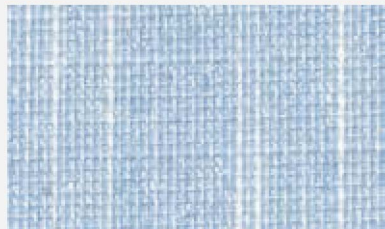
1065

verde | green



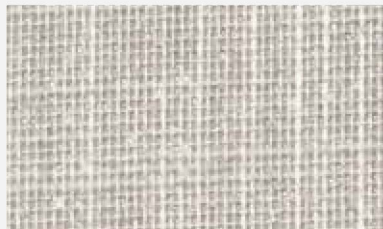
1115

celeste | sky blue



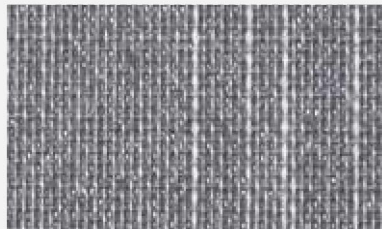
1051

perla | pearl



1058

plomo | plumber



Datos técnicos *Technical info*

La información contenida en esta hoja es indicativa y no puede ser considerada vinculante.
Information contained in this sheet is only indicative and may not be considered as binding.



Pesos / Weights
190 g/m² ± 10 %



Anchos / Widths
200 cm (estor-panel / roller-panel)
127 mm (lana vertical / vertical slot)



Espesor / Thickness
0,40 mm ± 0,05 mm



Composición / Composition
100 % polyester



Termsoldable
Thermo welding



Longitud de rollo
Roll length
40 m ± 5 %



Limpiar con agua trapo húmedo
Clean with a damp cloth