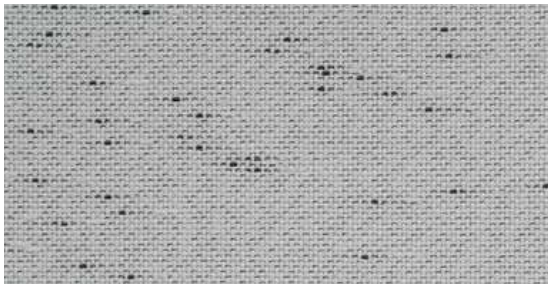


Decorative collection



Bergen



Oslo



New York



Chicago



Riyadh



Marrakech

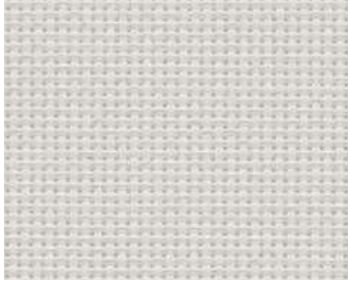


Pentagrama



Shine Bicolor

Bergen



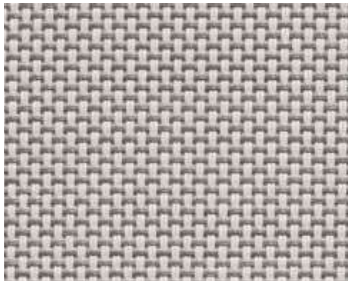
2421 White Plus



2422 White



2423 White I Linen



2427 White I Pearl Grey



2428 White I Bronze



2441 Charcoal

Composition	25% Polyester, 60% PVC, 15% Trevira CS	Widths	320 cm
Weight	320 g/m ²	Roll Length	30 ml
Thickness	0.57 mm	Cut Required	Crush cut, Ultrasonic
Openess Factor	5%	Fire Classification	UNE EN 13501 - 1:2007 (C-s3,d0) UNE EN 13773 - 2003 (Clase 1)



5 years warranty



Energy saving



Easy maintenance



Indoor comfort



Printable



Flame retardant

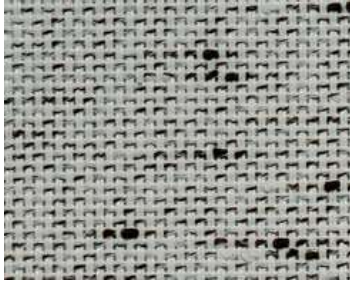


Lead free

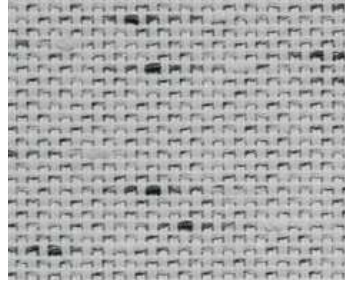


These properties are given as indicate and don't have any contractual value.

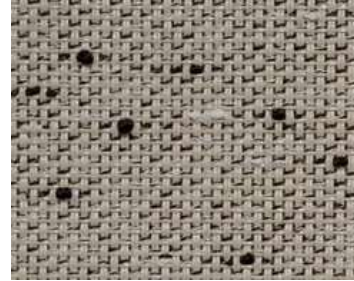
Oslo



DJC 001 Plottet Point Chesnut



DJC 1616 Plottet Point Pearl



DJE 001 Plottet Point Coffee

Composition	24% Polyester, 76% PVC	Widths	300 cm
Weight	400 g/m ²	Roll Length	30 ml
Thickness	1.03 mm	Cut Required	Crush cut, Ultrasonic
Openess Factor	6%	Fire Classification	UNE EN 13501 - 1:2007 (B-s2,d0) UNE EN 13773 - 2003 (Clase1)



5 years warranty



Energy saving



Easy maintenance



Indoor comfort



Printable



Flame retardant

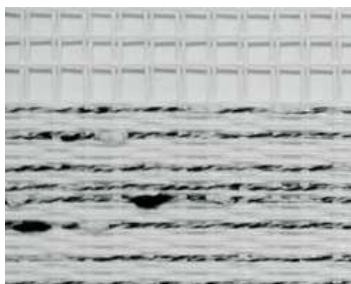


Lead free



These properties are given as indicate and don't have any contractual value.

New York



SJ 001 Stracciatella*



01049 Shadow



07048 Forest

Composition	30% Polyester, 70% PVC	Widths	250 cm - 220 cm*
Weight	310 g/m ²	Roll Length	30 ml
Thickness	0.69 mm	Cut Required	Crush cut, Ultrasonic
Openess Factor	Night & Day	Fire Classification	UNE EN 13501 - 1:2007 (C-s3,d0) UNE EN 13773 - 2003 (Clase 1)



5 years warranty



Energy saving



Easy maintenance



Indoor comfort



Printable



Flame retardant

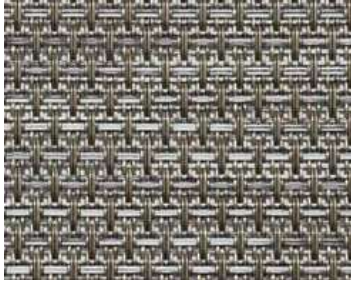


Lead free



These properties are given as indicate and don't have any contractual value.

Chicago



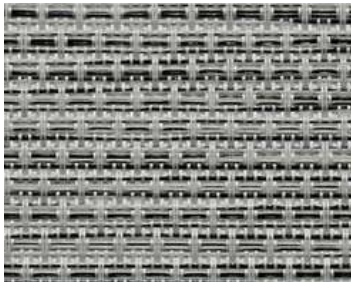
C5 Iceberg



B9 Gold



B15 Sand



B8 Moonlight

Composition	28% Polyester, 72% PVC	Widths	250 cm
Weight	480 g/m ²	Roll Length	27.4 ml
Thickness	1.08 mm	Cut Required	Crush cut, Ultrasonic
Openess Factor	10%	Fire Classification	NFPA 101 (Class A rating)



5 years warranty



Energy saving



Easy maintenance



Indoor comfort



Printable



Flame retardant

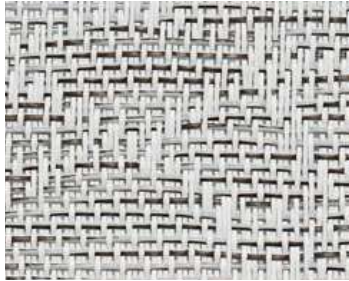


Lead free

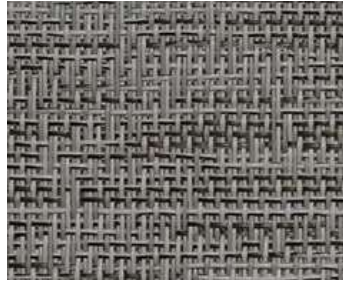


These properties are given as indicate and don't have any contractual value.

Riyadh



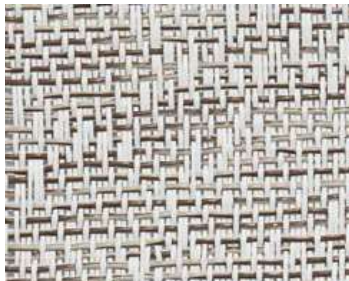
A10 Ash



D10 Volcano



E10 Hurricane



A8 Snowflake



D8 Desert



E8 Stone

Composition	28% Polyester, 72% PVC	Widths:	250 cm
Weight	464 g/m ²	Roll Length	27.4 ml
Thickness	1.07 mm	Cut Require	Crush cut, Ultrasonic
Openess Factor	3%	Fire Classification	NFPA 101 (Class A rating)



5 years warranty



Energy saving



Easy maintenance



Indoor comfort



Printable



Flame retardant



Lead free

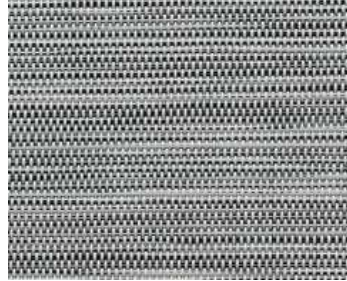


These properties are given as indicate and don't have any contractual value.

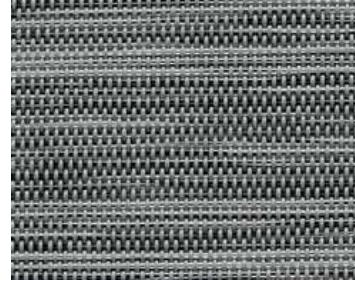
Marrakech



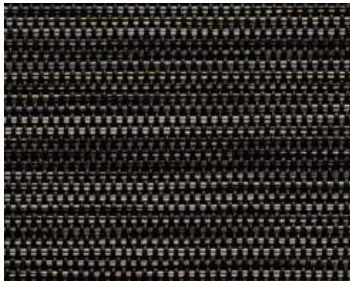
2612 Volcano



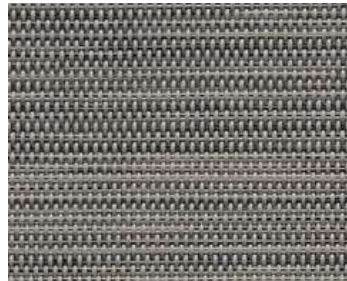
2615 Glacier



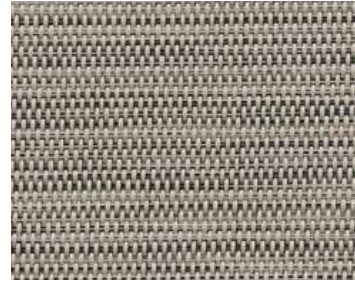
2617 Lunar



2613 Crust



2618 Stone



2616 Desert

Composition	29% Polyester, 71% PVC	Widths	320 cm - 89 mm - 127 mm
Weight	400 g/m ²	Roll Length	30 ml
Thickness	0.60 mm	Cut Required	Crush cut, Ultrasonic
Openess Factor	3%	Fire Classification	UNE EN 13501 - 1:2007 (C-s3,d0) UNE EN 13773 - 2003 (Clase 1)



5 years warranty



Energy saving



Easy maintenance



Indoor comfort



Printable



Flame retardant



Lead free



These properties are given as indicate and don't have any contractual value.

Pentagrama



23 - 1 Snow Cream



23 - 3 Snow Pearl



23 - 2 Snow Burst



23 - 4 Snow Cliff

Composition	24% Polyester, 76% PVC	Widths	300 cm
Weight	388 g/m ²	Roll Length	30 ml
Thickness	0.61 mm	Cut Required	Crush cut, Ultrasonic
Openess Factor	5%	Fire Classification	UNE EN 13501 - 1:2007 (C-s3,d0) UNE EN 13773 - 2003 (Clase 1)



5 years warranty



Energy saving



Easy maintenance



Indoor comfort



Printable



Flame retardant

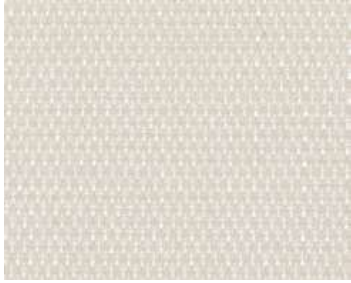


Lead free



These properties are given as indicate and don't have any contractual value.

Shine Bicolor



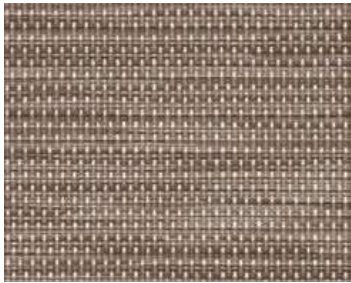
099099 Transparent | Transparent



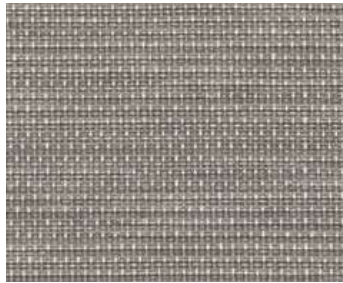
099002 Transparent | White



099007 Transparent | Pearl Grey



099011 Transparent | Bronze



099001 Transparent | Grey

Composition	15% Polyester, 85% PVC	Widths	250 cm
Weight	440 g/m ²	Roll Length	30 ml
Thickness	0.65 mm	Cut Required	Crush cut, Ultrasonic
Openess Factor	5%	Fire Classification	UNE EN 13501 - 1:2007 (C-s3,d0) UNE EN 13773 - 2003 (Clase 1)



5 years warranty



Energy saving



Easy maintenance



Indoor comfort



Printable



Flame retardant



Lead free



These properties are given as indicate and don't have any contractual value.